

Swifts

Swallows

# Welcome to Year 3



Junior

KS2




Topics this Year:

Autumn – Jambo Rafiki

Spring –Marvellous Moving Machines

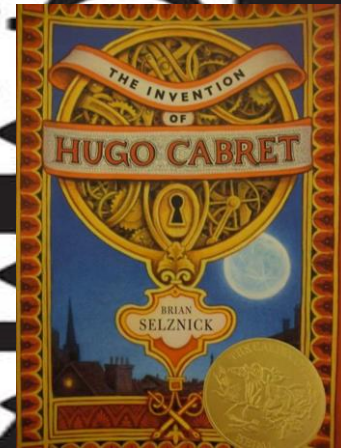
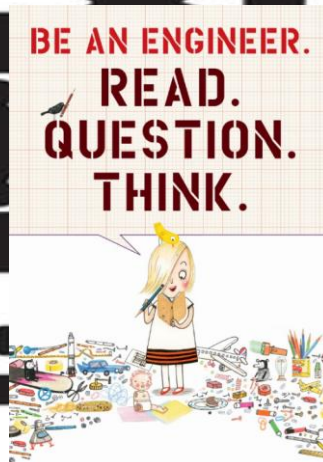
Summer – The Stone Age



**Jambo Rafiki**

*Hello friend*

# Marvellous Moving Machines



## The Stone Age





# Experiences to inspire us



**Marwell  
Wildlife**

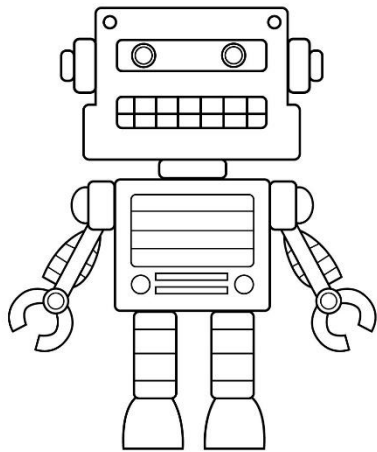


Estimated cost of  
trips/visitors for Year 3:

Autumn: £22

Spring: £12

Summer: £20



Marwell Zoo is Thursday 26<sup>th</sup>  
September. Any volunteers  
to help with this would be  
great.



# Times Tables

Times Tables Rockstars is an online system run by the same company as Numbots.



# Accelerated Reader



**Accelerated  
Reader™**

- A reading scheme run in Year 2 – Year 6
- Children take a 'Star Test' at the beginning/end of each term to determine their ZPD (Zone of Proximal Development).
- The ZPD is two numbers (e.g. 2.6-3.7) which shows roughly what level books the child should be reading.
- When children have completed a book, they can take an online quiz on this.
- This quiz can be done at home through the school website (Information – Curriculum – Accelerated Reader). We will put the link to the page on our Google Classroom homework.
- Quizzes can be done on books you may have at home! To check a book has a quiz, visit [www.arbookfind.co.uk](http://www.arbookfind.co.uk) .



# Homework

The children will have homework set on a Monday on Google Classroom.

This is due in by the following Monday morning.

This will be maths, English, spelling and an optional activity.

We do expect all chn to complete their homework. Any uncompleted work will be done in their break/ lunch time.



# Maths Homework

MyMaths – login



Times Tables Rockstars

Sheet/Game homework







# Spelling

- Spelling will work in the same system as Year 2.
- Children will move on to another spelling list once they can correctly spell all the words on the previous list.
- We will check their books fortnightly.
- We check spellings from Monday-Friday so please check their books at the end of the week to see which spellings they need to practise.
- We continue to consolidate these through English and Grammar Punctuation and Spelling lessons.



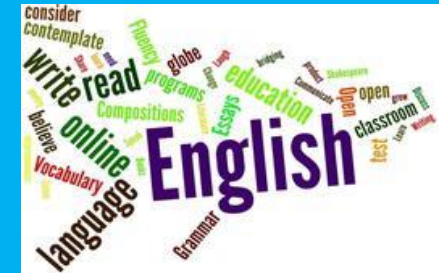
# English Homework

Reading Activity

Reading Comprehension

Writing task

Grammar Activity



Optional Challenges each week  
connected with our topic

# RSHE

Getting to know you!

Bacteria and Viruses

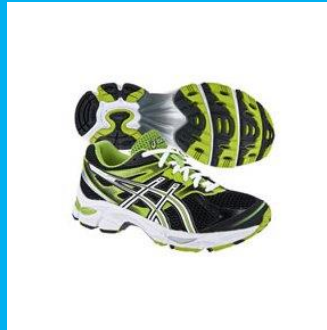
Peer mediation – identifying emotions, conflict resolution, similarities and differences.

We also aim to include regular circle times within our timetable to provide opportunities to discuss any worries or concerns, key events of the week and encourage a sense of belonging.

# PE and Games

Swallows PE - Monday & Wednesday

Swift PE - Wednesday & Friday



Trainers for all  
PE lessons



Blue tracksuit  
for cold weather



Must wear  
socks for PE

Must be able to take them  
out on their own or use tape.  
They should bring own tape



NAMED  
PLEASE!

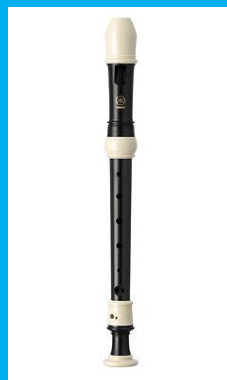


If your child is going home with some-one different to usual – please phone the office



Telling the time

Fruit  
Snack or  
sandwich



Recorder is on  
Wednesday

# Communication Books

- Children will bring home a blue communication book.
- In the front/ back of this book are their passwords and their ZPD (Accelerated Reader level).
- The rest of the book is for parents to write in what their child read each day at home, if you would like to.
- The book is also for parents to communicate any messages with us. However, if it is urgent, please email/call the office and we will get back to you as soon as we can.

# Computing

## Pupil Acceptable Use Agreement – for older pupils (Key stage 2)

Please sign and date this document yourselves and ask your child to do the same.

Either hand this in to the office or ask your child to hand it in Miss Hoskins, Mrs Lund or Miss Mackinnon.

# Parent Helpers

If you are able to help out at school at all, we would be very grateful!

Please let the office know which days and times and we will be in touch.

Please note: you will need an up to date DBS which can be arranged through the office.



We are really looking  
forward to a fantastic year  
in Year 3!